

August 25, 2005

Nancy Merritt
2300 Portage St. Apt. 355
Kalamazoo, MI 49001


Dear Mrs. Merritt,

Regarding your request for information about the transfer slip that had to be filled out before you could attend high school, I could not find out any information specifically about the transfer slip. Here is the impression I got from reading articles about the schools. At that time county and city schools were separate systems. Clay Township taxes supported Clay Township schools. However, Clay Township did not have a high school, so the Township had to pay tuition to the City Schools when one of their residents wanted to attend the city high school. That is probably where the transfer slip comes in.

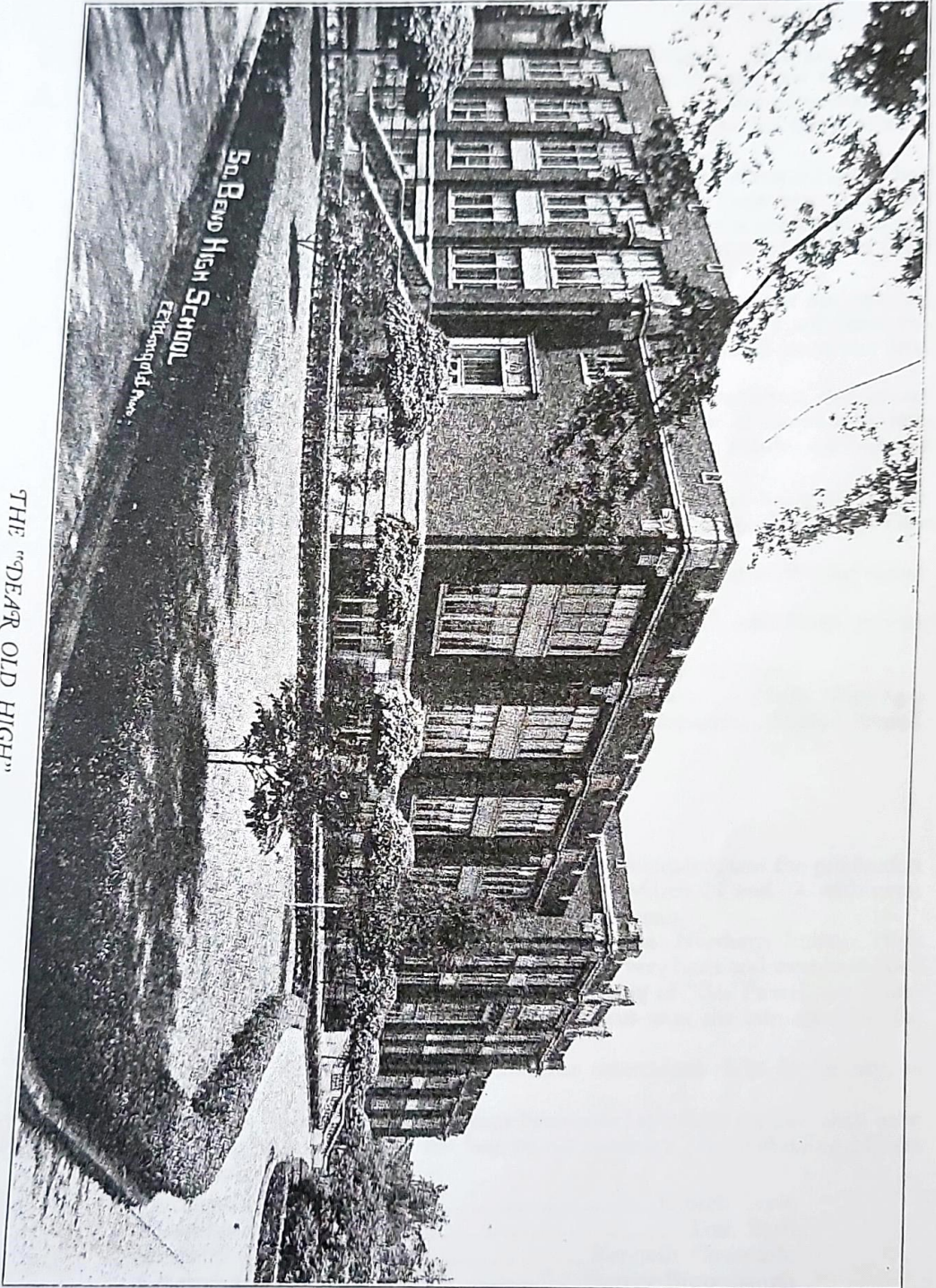
I have included some pictures and other information about the Glee Club that I found in the 1925 and 1926 Interlude publications from the South Bend High School.

I hope this information is helpful to you.

Sincerely,



Jane Spencer



THE "DEAR OLD HIGH"

Ho
So
So
B
G
N
T
O

Re
Sou
Int

back row, left to right: Irene Stark, Margaret Angus, Edith Neumann, Mildred Riles, Gladys Hummer, Berdella Young, Miss Harmon, director; Luella Freeh, accompanist; Frances De Voss, Gertrude
 Middle row: Bertha Riles, Alpha Kiplinger, Mildred Carpenter, Eleanor Rumpf, Evelyn Moller, Mary Helkes, Dorothea Eddy, Eleanor Bergstedt, Gladys Mellander,
 Ruth Warner,
 First row: Catherine Gillis, Mary H. Snyder, Gladys Hummer, Berdella Young, Miss Harmon, director; Luella Freeh, accompanist; Frances De Voss, Gertrude

Girl's Glee Club

BERDELLIS YOUNG

THE review of our work must include the opera, The Mikado. It is not necessary to say anything about the success of the performances for you saw those. The people seemed to like the girl's costumes very much for we received invitations to sing for the Teachers' Institute at Southeast Junior High School and for the joint meeting of the Womans' and Progress Clubs.

Some of the activities of the Glee Clubs are similar to those of other High School organizations. That of a Contest. Perhaps some of you don't know how they came out because you were not there. But just the same the clubs put up a noble fight to win. And win we did because we had the undying confidence of our respected director, Miss Harmon. She always brings us out on top.

The Girls' Club wish to congratulate the Boys' Glee Club and the orchestra for their good work. It isn't all boys that can take first places though. We will show you next year. The Band will also make a showing next year, for now we all know just what to work for, don't we Band Members?

The combined clubs gave a concert with the band, and orchestra and special chorus to raise money for instruments. This, we dare say was one of the best concerts given in the city this last winter. Many people will learn in the future, we hope, to appreciate their own High School talent.

An assembly was given by the Clubs on May 27 the songs used being the contest numbers. An annual picnic is always enjoyed to the fullest extent possible by the Glee Clubs. This year it was at Clear Lake, May 27.

We were honored very highly to receive an invitation to sing at the Baccalaureate Services at the First Methodist Church, June 6, 1926.

Much of our success is accredited to our accompanist, Miss Luella Freeh, and we appreciate her efforts and friendliness.

Those who will take over the management of the club for 1927 are:

President.....	Gladys Hummer	Secretary-Treasurer.....	Alpha Kiplinger
Vice-President.....	Berdellis Young	Librarian and Reporter.....	Eleanor Rumpf

Boys' Glee Club

R. EDWARD CURRY

The biggest task of the year, in which both clubs participated, was the production Gilbert & Sullivan's "Mikado". The opera was presented March 22 and 24 with great success under the direction of our sponsor, Miss Effie Harman.

The next most important event was the First Annual Northern Indiana High School Music Contest, held here May 8. The Boys worked very hard and were rewarded by winning the silver loving cup for the most artistic singing of "Sea Fever", by Masefield. With the aid of the Boys' Club the Mixed Chorus won the cup awarded for their event.

At various times during the year the Club has entertained clubs in the city, as has the Girls' Club.

The Glee Clubs in S.B.H.S. have always been noted for their loyalty, they have given their services to give the public the best music possible. The following officers have been elected for next year:

President.....	Russell Love
Vice-President.....	Tom Bath
Secretary and Treasurer.....	Kenneth Coverdale
Reporter and Librarian.....	Eugene Butterbaugh

The Glee Clubs are closing their year by singing at the Baccalaureate Service

June 6.



the Student Loan Fund established by the Class of '25, as follows:

- (1) The administration of the Fund shall rest entirely in the hands of a committee composed of the Principal of the High School, the Dean of Girls, the Dean of Boys, the Sponsor of the Senior Class and the President of the Senior Class.
- (2) Each and every check or order for money issued on this fund shall be signed by both the Dean of Girls and the Dean of Boys.
- (3) This fund shall be used to help any deserving and worthwhile student, who, in the estimation of the above named committee, will be benefitted by such a loan.
- (4) All notes shall be endorsed by someone accepted by the com-

mittee as security.

- (5) To clearly understand that this Loan Fund and not a Gift Fund, and that all and any loan shall not be made for a period of time greater than two calendar years and that each loan shall bear simple interest at the rate of four per cent per annum and if the committee deems it wise a student's note may be renewed for one calendar year at the same rate of interest.
- (6) The above named committee shall be responsible for the security and safeguarding of this fund and for its growth and increase and for the service which it should render as expressed by the spirit in which it was instituted by the Class of '25.

The Glee Clubs

The year 1924-1925 has been a busy one for the Glee Clubs. In our practices on Monday, Wednesday, and Thursday of each week we have prepared for many programs which we have presented before various organizations of the city. We have had social functions, too.

On Armistice Day, November 11, the Glee Clubs sang two selections on the program at the Blackstone Theatre.

A unique feature of our activities was our singing contest, which was held in assembly, Wednesday, Nov. 26, and was won by the Boys' Glee Club.

The Boys' Glee Club sang before the Rotary Club, the Lions Club and the Chamber of Commerce. The Girls' Glee Club sang before the University Club. The combined Glee Clubs broadcasted a program of songs over the radio in the late fall.

During the Electric Show the Glee Clubs sang selections from the opera

"Chimes of Normandy," which they presented March 12 and 14. The opera, always the Glee Clubs' annual achievement was a splendid success, due to the help of Miss Anna Christman, Miss Marjorie Blake, James T. Cover, Willis Engel, and A. B. Williamson, and to the splendid direction of Miss Harman and the kind co-operation of the Art Department and the Household Arts Department.

A few weeks after the opera Bertha Reis, Russell Love, Alfred Krueger, and La Mar Phend, accompanied by Margaret Waterfield, presented a program of vocal solos before the Lions' Club, as representatives of the Glee Club.

The week of May 4-9, 1925, was Music Week, and then the annual Music Festival was presented by the schools of South Bend. Friday evening, May 8, was High School evening, when the High School Music Department pre-



sented their program. The Glee Clubs sang a group of songs, and also assisted the High School Chorus in their numbers.

Monday, May 11, the Boys' Glee Club elected the officers for the year 1925-26. They are:

President.....Stanley Bierwagen
Vice-President.....Elmer Jordan
Secy.-Treas......Ralph Miller
Librarian and Reporter, Edward Curry

Wednesday, May 13, the Girls' Glee Club elected the officers for the year 1925-26. They are:

President.....Gertrude Singrey
Vice-President.....Frances De Voss
Secy.-Treas......Gladys Hummer
Lib. and Reporter....Berdellis Young

The senior members of the Glee Club gave a song number on the evening of Commencement, June 11, 1925.

The year's activities of the Glee Club ended with a picnic of the entire Music Department, including the band, orchestras, and Glee Clubs at Bear Lake, May 28, 1925.

Girls' Athletics

The past year has held nothing striking or very out-of-the-ordinary in girls' athletics, but it has been very satisfying.

Last fall we started everything by hockey, which had its initial trial at that time, and quite successful it proved to be. Owing, no doubt, to our general greenness at the game we had time for only one game, which was between the Juniors and Seniors. The Seniors came out on top with a score of 10-1.

After that basketball pressed us for attention and kept us busy during the winter months. This was the best season of all, and the Juniors are still a

little "puffed up" about the game they took from the Seniors. But the older girls, as usual, were champs. The basketball banquet on February 27 was the climax and end to the basketball season.

Volleyball followed basketball. As a rule it has been considered mighty tame after the latter sport, but this year we began to play some real volleyball, and learned that it could be very interesting. There was much more enthusiasm shown this year than in former years. The first semester Sophs and 9B's fought for the championship and the Sophs came out ahead.

Band and Orchestra

During the past year the Band has appeared at the following places:

Home basketball and football games.
 Radio Station W.G.A.Z.
 American Legion Hall.
 Rotary Club.
 Chamber of Commerce.
 South East Jr. High.
 Spring Festival.
 Memorial Day Parade.
 Laporte.
 Class Night.

The Orchestra has appeared at the following places:

Kiwanis Club, Rotary Club, Radio Station W.G.A.Z., Christmas Cantata, Assembly Program, South East Jr. High Assembly, South East Jr. High dedication, Vocational School Assembly, Operetta, Junior Ex. Play, Lakeville High School Commencement, Spring Festival, Senior Class Play, School Commencement.



GIRLS' GLEE CLUB

Back row, left to right: Irene Stark, Margaret Angus, Ethel Neidermann, Mildred Imhoff, Nancy McAdam, Hazel Kramer, Zoe Francis Wilson, Helen Christman, Dorothy Green.
 Middle row: Bertha Kline, Alpha Kiplinger, Mildred Carpenter, Eleanor Kumpf, Evelyn Moller, Mary Heikes, Dorothea Kiddy, Eleanor Bergstedt, Gladys Melander, Ruth Warner.
 First row: Catherine Gibbs, Mary H. Snyder, Gladys Hummer, Berdellis Young, Miss Harmon, director; Luelia Frech, accompanist; Frances De Voss, chorale singer; Jean Christman, Virginia Stroup.

THE review to say people sing for the V-ing of the Som organization out because And win Harmon. The their good v next year. The to work for The chorus to ra given in the appreciate th An a numbers. Al Clubs. Thi We eate Services Much appreciate ha Thos Vice-President The h Gilbert & Su success unde The i School Music by winning t held. With their event. At va has the Girls The given their s have been cl June 6.